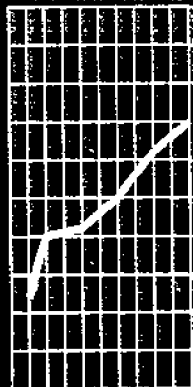




February 1996

Monthly Summary of Statistics Western Australia



ABS Catalogue No. 1305.5



CONTENTS

	<i>Table</i>	<i>Page</i>	
POPULATION	1.1	Estimated Resident Population	1
	1.2	Components of Population Change	2
	1.3	Registrations of Births, Deaths, Marriages and Divorces	3
	1.4	Rates of Birth, Deaths, Marriages and Divorces	3
TOURISM	2.1	Permanent and Long Term Arrivals and Departures	4
	2.2	Short Term Overseas Arrivals and Departures	5
	2.3	Short Term Arrivals by Air: Last Six Months	5
	2.4	Short Term Arrivals: Purpose of Journey	6
	2.5	Short Term Departures: Last Six Quarters	7
	2.6	Short Term Departures: Purpose of Journey	8
	2.7	Tourist Accommodation	9
EMPLOYMENT	3.1	Labour Force Status: Seasonally Adjusted	10
	3.2	Labour Force Status: Trends	11
	3.3	Employed Wage and Salary Earners by Industry and Sector	12
	3.4	Average Weekly Earnings of Employees	13
	3.5	Industrial Disputes Causing Stoppage at Work	14
RETAIL	4.1	Monthly Retail Turnover: Original Estimates	15
	4.2	Consumer Price Index: Perth	16
CONSTRUCTION	5.1	New Residential Building Approved	17
	5.2	New Non-Residential Building Approved	18
	5.3	Selected Housing Price Indexes: Perth	19
	5.4	Price Indexes of Materials Used in Building Other Than House Building: Perth	20
PRODUCTION	6.1	Livestock Slaughtered	21
	6.2	Meat Produced	21
	6.3	Wool Receipts	22
	6.4	Energy Production	22
	6.5	Mineral Exploration: Expenditure by Type of Mineral Sought	23
	6.6	Mineral Production	23
OVERSEAS TRADE	7.1	Imports by Selected Divisions	24
	7.2	Exports by Selected Divisions	25
TRANSPORT	8.1	Vehicle Registration Statistics	26
	8.2	New Motor Vehicle Registrations	26
FINANCE	9.1	Private New Capital Expenditure by Selected Industry Groups	27
	9.2	State Final Demand and Production Account	27
STATISTICAL SUMMARY	10.1	Key State Indicators	28

INQUIRIES

- PHONE ■ For more information about these statistics and of related unpublished statistics, contact Information Services on (09) 360 5140
- MAIL ■ Write to or visit Information Services, Bureau of Statistics,
Level 16, Exchange Plaza Building, 2 The Esplanade, Perth WA 6000
- ELECTRONIC ■ On Elderlink key *620#
■ On Dial-A-Statistic phone (06) 252 6017
-

**AUSTRALIAN BUREAU OF STATISTICS
WESTERN AUSTRALIA
FEBRUARY 1996 RELEASES**

Catalogue

<i>Number</i>	<i>Publication Title</i>	<i>Release Date</i>
1305.5	Monthly Summary of Statistics, Western Australia, February 1996	29 February 1996

**SYMBOLS AND OTHER
USAGES**

The following symbols, where shown in columns of figures or elsewhere in tables, mean:

- n.a. not available
- n.e.i. not elsewhere included
- n.p. not available for separate publication (but included in totals where applicable)
- n.y.a. not yet available
- nil or rounded to zero
- .. not applicable
- * Subject to sampling variability too high for most practical purposes.
- p preliminary - figure or series subject to revision
- r figure or series revised since previous issue
- break in continuity of series (where drawn between two consecutive figures or columns)

ROUNDING FIGURES

Where figures have been rounded, discrepancies may occur between sums of the component items and totals.

P.C.Kelly
Deputy Commonwealth Statistician
and Government Statistician
for Western Australia

1.1 ESTIMATED RESIDENT POPULATION

Analysis of Table 1.1

The mean population for 1994-95 increased by 27,700 over the previous year. This compares with an increase of 21,100 between 1992-93 and 1993-94.

The mean population for the 1994 calendar year increased by 25,300. This figure was higher than the 1993 increase of 19,200.

In the June quarter 1995, Western Australia's population grew by 7,500 persons to 1,731,700. This was an increase of 30,600 persons since the 1994 June quarter.

Period	At end of period			Mean Population
	Males	Females	Persons ¹	
			000	
Financial years				
1992-93	842.4	833.9	1 676.3	1 667.4
1993-94p	854.6	846.4	1 701.1	1 688.5
1994-95p	869.7	862.0	1 731.7	1 716.2
Calendar years				
1992	837.7	829.1	1 666.7	1 657.9
1993	847.9	839.5	1 687.4	1 677.1
1994 p	861.1	853.3	1 714.4	1 702.4
Quarters				
Mar 94	851.7	843.5	1 695.3	..
Jun 94	854.6	846.4	1 701.1	..
Sep 94 p	858.5	850.5	1 709.0	..
Dec 94 p	861.1	853.3	1 714.4	..
Mar 95 p	866.1	858.2	1 724.2	..
Jun 95 p	869.7	862.0	1 731.7	..

¹ All estimates have been finalised using 1991 Census results
Reference: Australian Demographic Statistics (3101.0)

Analysis of Table 1.2

In the June quarter 1995 the total increase in population was 7,500. The total increase for the 1994-95 year of 30,700 is higher than for any financial year since 1989-90. Between March and June 1995 quarters, all three components of population change decreased.

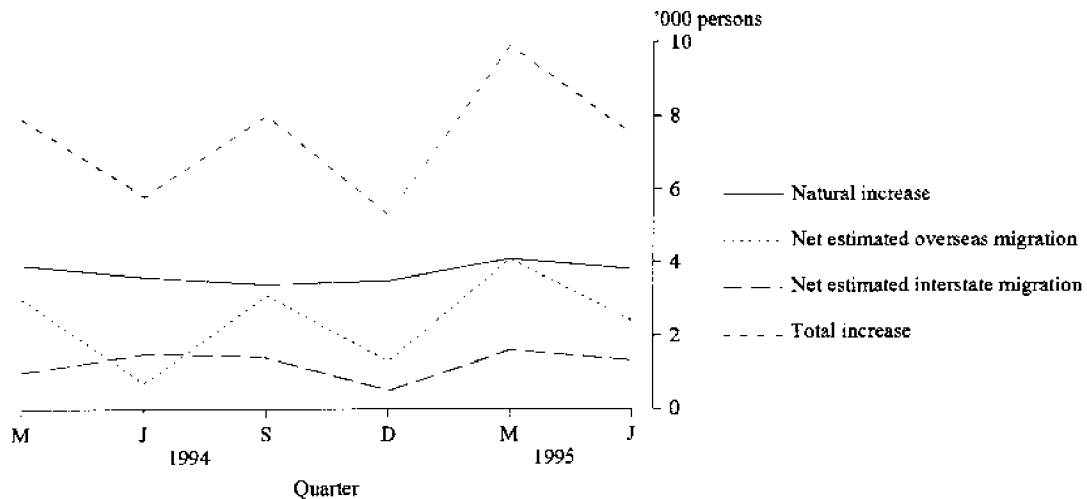
There was no change in the natural increase between 1993 and 1994. However, net estimated overseas migration jumped from 5,500 in 1993 to 8,100 in 1994, and net estimated interstate migration increased from 600 to 4,500 persons.

1.2 COMPONENTS OF POPULATION CHANGE

Period	Natural increase	Net estimated overseas migration ¹	Net estimated interstate migration	Total increase
(000)				
Financial years				
1992-93	14.7	4.8	-0.3	19.0
1993-94	14.3	6.7	3.7	24.7
1994-95 p	14.8	11.0	4.9	30.7
Calendar years				
1992	14.9	5.7	-0.8	19.8
1993	14.4	5.5	0.6	20.5
1994 p	14.4	8.1	4.5	26.9
Quarters				
Mar 94	3.9	3.0	1.0	7.9
Jun 94	3.6	0.7	1.5	5.8
Sep 94 p	3.4	3.1	1.4	8.0
Dec 94 p	3.5	1.3	0.5	5.3
Mar 95 p	4.1	4.1	1.6	9.9
Jun 95 p	3.8	2.4	1.3	7.5

¹ Includes an adjustment for 'category jumping'
Reference: Australian Demographic Statistics (3101.0)

**COMPONENTS OF POPULATION CHANGE
WESTERN AUSTRALIA**



Analysis of Table 1.3

There was a rise of 284 deaths in June quarter 1995 from March quarter 1995. However, the number of marriages dropped sharply by 880 from March quarter 1995, repeating the pattern that occurred in 1994.

The number of live births, infant deaths and divorces in June quarter 1995 were similar to the previous quarter.

1.3 REGISTRATION OF BIRTHS, DEATHS, MARRIAGES AND DIVORCES

Period	Live births	Infant deaths	Total deaths	Marriages	Divorces
Financial years					
1992-93	25 080	147	9 998	10 214	4 385
1993-94	25 309	148	10 522	10 316	4 934
1994-95 p	25 018	137	10 261	10 381	4 930
Calendar years					
1992	25 051	171	9 902	10 118	4 540
1993	25 079	143	10 318	10 382	4 654
1994 r	25 124	137	10 295	10 366	5 024
Quarters					
Mar 94	6 421	31	2 427	3 113	1 050
Jun 94	6 446	39	2 519	2 486	1 283
Sep 94	6 257	38	2 812	1 462	1 333
Dec 94 p	6 000	29	2 537	3 305	1 358
Mar 95 p	6 412	37	2 314	3 247	1 081
Jun 95 p	6 349	33	2 598	2 367	1 158

Reference: Australian Demographic Statistics (3101.0)

Analysis of Table 1.4

Rates for marriages in June quarter 1995 dropped sharply from March quarter 1995, reflecting the corresponding fall in the number of marriages.

The rates for live births and infant deaths dropped slightly in June quarter 1995 from March quarter 1995, but increased slightly for deaths.

The divorce rate for June quarter 1995 rose slightly but not as highly from the preceding quarter as it did in June quarter 1994.

For more information regarding these tables, please contact Mike Joske on (09) 360 5276

1.4 RATES OF BIRTHS, DEATHS, MARRIAGES AND DIVORCES

Period	Live births ¹	Infant deaths ²	Total deaths ¹	Marriages ¹	Divorces ¹
Financial years					
1992-93	15.04	5.86	5.99	6.13	2.63
1993-94	14.99	5.85	6.23	6.11	2.92
1994-95 p	14.58	5.48	5.98	6.05	2.87
Calendar years					
1992	15.11	6.83	5.97	6.10	2.74
1993	14.95	5.70	6.15	6.19	2.78
1994 p	14.76	5.45	6.05	6.09	2.95
Quarters					
Mar 94	15.19	4.83	5.74	7.36	2.48
Jun 94	15.18	6.05	5.93	5.86	3.02
Sep 94	14.68	6.07	6.60	3.43	3.13
Dec 94	14.02	4.83	5.93	7.72	3.17
Mar 95 p	14.92	5.77	5.38	7.55	2.51
Jun 95 p	14.70	5.20	6.01	5.48	2.68

¹ For financial and calendar years the rate is per '000 mean resident population. For quarters, the mean is averaged between the previous and current quarterly population.

² Infant deaths per 1,000 live births.

Reference: Australian Demographic Statistics (3101.0)

2.1 PERMANENT AND LONG TERM ARRIVALS AND DEPARTURES

Analysis of Table 2.1

In September quarter 1995 there were 7,420 long term and permanent arrivals, an increase of 12% compared with September quarter 1994. Long term and permanent departures increased 10% compared with the same period in 1994.

There were 2,800 permanent settler arrivals to Western Australia in September quarter 1995. This is an increase of 390 arrivals or 16% compared with the same quarter last year. This follows on a 27% increase for June quarter 1995 compared with June quarter 1994.

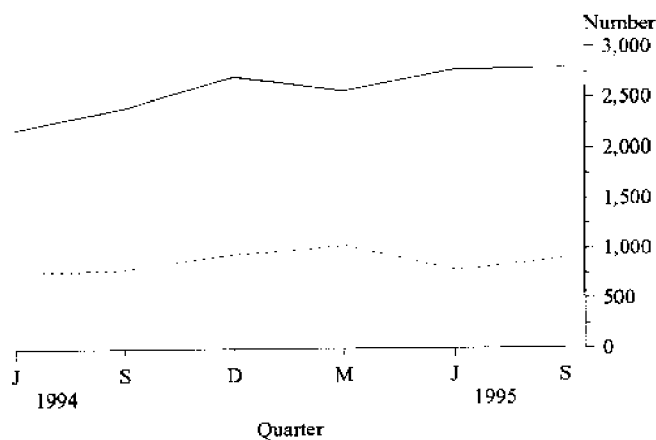
The number of long term overseas visitor arrivals (visitors who intend to stay for longer than 12 months) for September quarter 1995 increased by 1,330 or 101% from the previous quarter. This repeated the pattern of growth for the same quarters in 1994.

The total of 7,420 permanent and long term arrivals in September quarter 1995 exceeded departures by 3,630 or 96%.

Period	Permanent movement	LONG TERM MOVEMENT		Total movement
		Australian residents	Overseas visitors	
ARRIVALS				
Financial years				
1992-93	7 930	8 260	6 090	22 280
1993-94	7 740	8 900	7 430	24 070
1994-95	10 380	9 070	8 470	27 920
Quarters				
Jun 94	2 190	1 700	1 150	5 040
Sep 94	2 410	2 120	2 080	6 610
Dec 94	2 720	2 950	1 160	6 830
Mar 95	2 570	2 210	3 910	8 700
Jun 95	2 780	1 790	1 310	5 880
Sep 95	2 800	1 980	2 640	7 420
DEPARTURES				
Financial years				
1992-93	3 410	7 180	3 680	14 260
1993-94	3 430	7 340	4 140	14 900
1994-95	3 580	7 560	4 710	15 860
Quarters				
Jun 94	780	1 880	840	3 490
Sep 94	800	1 750	880	3 430
Dec 94	950	1 590	1 730	4 270
Mar 95	1 040	2 390	1 070	4 500
Jun 95	790	1 830	1 030	3 650
Sep 95	900	1 760	1 130	3 790

Reference: Unpublished table PMTR0001

PERMANENT SETTLER ARRIVALS AND PERMANENT DEPARTURES
WESTERN AUSTRALIA : LAST SIX QUARTERS



Source: Unpublished Table PMTR001

— Arrivals

... Departures

Analysis of Table 2.2

Short term overseas visitor arrivals for September quarter 1995 increased by 400 or only 1% compared with the same quarter last year. This follows on a 13% increase for June quarter 1995 compared with June quarter 1994. There was a fall of only 200 (less than 1%) from June quarter 1995.

The number of Australian residents departing on short term overseas journeys in the September quarter 1995 increased by 12,200 or 17% from June quarter 1995. However, it also represented a fall of 1,400 or 2% from September quarter 1994.

December quarter 1994, which includes the Christmas holidays, had the highest number of arrivals and departures in the financial year.

2.2 SHORT TERM OVERSEAS ARRIVALS AND DEPARTURES

<i>Period</i>	<i>Australian residents</i>	<i>Overseas visitors</i>	<i>Total</i>
ARRIVALS			
Financial years			
1992-93	261 600	234 000	495 600
1993-94	269 900	297 700	567 600
1994-95	289 200	339 700	628 900
Quarters			
Jun 94	59 100	65 800	124 900
Sep 94	82 300	73 600	155 900
Dec 94	72 300	106 200	178 500
Mar 95	75 900	85 600	161 500
Jun 95	58 700	74 200	132 900
Sep 95	83 500	74 000	157 500
DEPARTURES			
Financial years			
1992-93	269 800	232 500	502 300
1993-94	274 800	290 500	565 300
1994-95	292 300	343 600	635 900
Quarters			
Jun 94	69 800	76 900	146 600
Sep 94	84 200	71 600	155 800
Dec 94	76 900	92 800	169 700
Mar 95	60 500	96 900	157 400
Jun 95	70 600	82 200	152 800
Sep 95	82 800	72 000	154 800

Reference: Unpublished table PMTR0001

Analysis of Table 2.3

Short term overseas arrivals by air for September quarter 1995 (73,800) were up by only 300 or 0.4% compared with September 1994. There was a fall of 300 arrivals from June quarter 1995 with Singapore recording the biggest drop of 5,100 or 31%. The United Kingdom and Ireland recorded a drop of 1,700 or 15%.

The major source countries were Singapore (with 15%), the United Kingdom and Ireland, Indonesia and Japan with 13%, and New Zealand (9%).

During the September quarter 1995, 59% of all short term arrivals by air were from Asia.

2.3 SHORT TERM OVERSEAS ARRIVALS BY AIR¹

<i>Country of residence</i>	<i>Jun 1994</i>	<i>Sep 1994</i>	<i>Dec 1994</i>	<i>Mar 1995</i>	<i>Jun 1995</i>	<i>Sep 1995</i>
	('000)					
Asia						
Indonesia	7.4	8.9	13.1	12.3	9.9	9.9
Japan	5.2	8.4	7.4	7.9	5.2	9.4
Malaysia	7.0	6.9	7.9	7.4	7.9	6.2
Singapore	14.5	10.9	21.4	10.9	16.4	11.3
Thailand	3.3	2.5	2.5	1.6	3.1	2.1
Other Asia	3.6	4.5	3.8	4.7	4.4	4.9
Total Asia	41.0	42.1	56.1	44.8	46.8	43.7
Other						
Germany	1.6	2.3	4.4	3.3	1.9	2.3
New Zealand	5.8	7.5	6.9	4.7	5.2	6.9
U.K. and Ireland	9.7	10.0	21.0	18.9	11.1	9.4
U.S.A.	1.9	2.4	3.5	2.8	2.0	2.4
Other	5.6	9.2	14.1	11.0	7.1	9.1
Total Other	24.6	31.4	49.9	40.7	27.2	30.1
Total	65.7	73.5	106.0	85.5	74.1	73.8

¹ Comprises travellers whose intended or actual stay is less than twelve months.

Reference: Unpublished table PMTR0031

Analysis of Table 2.4

In September quarter 1995 there were 73,800 short term overseas arrivals by air. Of these, 53% (39,000 persons) gave the reason for their journey as 'holiday', and a further 23% (17,200) said they were 'visiting friends or relatives'.

People on holiday were mainly from Singapore and Japan (19% each), Indonesia (16%), and Malaysia (9%).

People visiting friends or relatives were predominantly from the United Kingdom and Ireland (28%), New Zealand (20%), Singapore (10%) and Malaysia (7%).

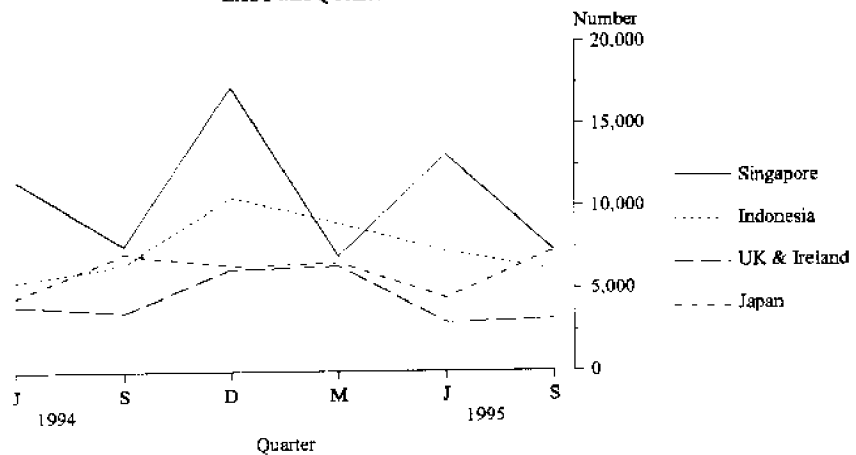
2.4 SHORT TERM OVERSEAS ARRIVALS BY AIR : PURPOSE OF JOURNEY: SEPTEMBER QUARTER 1995

Country of residence	Convention/ business ¹	Visiting friends/ relatives	Holiday	Employment and education (⁰⁰⁰)	Other and not stated	Total this quarter
Asia						
Indonesia	0.9	0.8	6.2	1.1	0.8	9.9
Japan	1.2	0.5	7.3	0.2	0.2	9.4
Malaysia	0.6	1.2	3.7	0.6	0.1	6.2
Singapore	1.0	1.7	7.3	1.0	0.3	11.3
Thailand	0.4	0.1	1.3	0.2	0.1	2.1
Other Asia	1.3	1.2	1.5	0.6	0.4	4.9
Total Asia	5.3	5.5	27.3	3.7	1.8	43.7
Other						
Germany	0.3	0.2	1.7	0.1	—	2.3
New Zealand	0.4	3.5	2.5	0.2	0.3	6.9
U.K. and Ireland	1.0	4.9	3.2	0.2	0.2	9.4
U.S.A.	0.8	0.8	0.4	0.2	0.2	2.4
Other	1.8	2.5	3.8	0.4	0.7	9.1
Total Other	4.3	11.7	11.7	1.0	1.4	30.1
Total	9.6	17.2	39.0	4.8	3.3	73.8

¹ From September 1994 includes convention, conference and business.

Reference: Unpublished table PMTR0031

SHORT TERM OVERSEAS ARRIVALS BY AIR:
FOR HOLIDAYS IN WESTERN AUSTRALIA
LAST SIX QUARTERS



Source: Unpublished Table: PMTR0031

Analysis of Table 2.5

In September quarter 1995 there were 82,600 short term resident departures by air, a fall of 1,500 or 2% from September quarter 1994.

Of residents departing overseas, 24% were destined for Indonesia and another 16% were headed for the United Kingdom and Ireland. Other common destinations were Singapore (9%), Malaysia (8%) and the United States of America, New Zealand and Thailand with 7%.

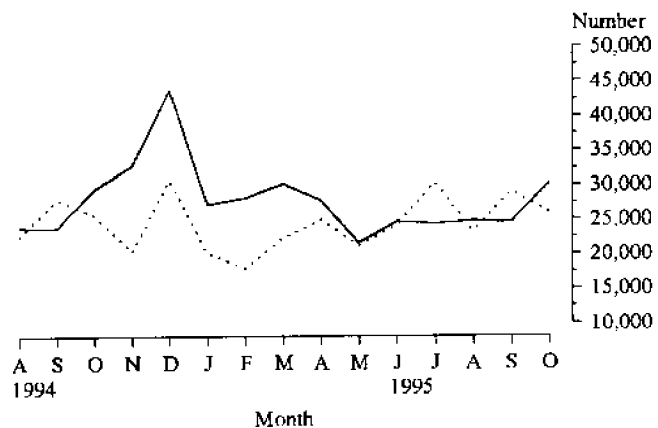
2.5 SHORT TERM OVERSEAS RESIDENT DEPARTURES BY AIR

Country departing to	Jun 1994	Sep 1994	Dec 1994	Mar 1995	Jun 1995	Sep 1995
	('000)					
Asia						
Hong Kong	2.6	3.1	2.6	2.5	2.7	2.4
Indonesia ¹	14.4	21.0	19.4	14.0	13.8	19.8
Japan	0.9	0.9	0.9	0.7	0.7	0.4
Malaysia	5.4	6.5	6.5	5.0	5.1	6.8
Singapore	5.6	7.7	6.9	6.0	5.2	7.5
Thailand	3.9	4.7	4.1	3.2	3.5	5.9
Other Asia	3.8	3.8	5.9	4.9	4.2	4.3
Total Asia	36.5	47.8	46.3	36.3	35.1	47.0
Other						
Germany	0.9	0.8	0.7	0.7	0.9	0.4
Italy	1.4	1.5	0.8	0.6	1.2	1.3
New Zealand	3.8	6.5	7.6	7.3	4.4	6.0
U.K. and Ireland	12.7	13.3	8.1	6.2	13.2	13.4
U.S.A.	5.0	4.9	4.8	3.4	5.5	5.6
Other	9.4	9.2	8.4	5.8	10.4	9.0
Total Other	33.2	36.2	30.4	24.0	35.4	35.7
Total	69.7	84.1	76.8	60.3	70.6	82.6

¹ Includes Bali.

Reference: Unpublished table PMTR0031

TOTAL SHORT TERM ARRIVALS OF OVERSEAS VISITORS AND DEPARTURES OF WESTERN AUSTRALIAN RESIDENTS BY MONTH



Source: Unpublished table PMTR0013

— Arrivals
 Departures

Analysis of Table 2.6

The main reasons given for short term resident departures by air in September quarter 1995 were 'holiday' (58%), 'visiting friends or relatives' (19%), and attending 'convention or conference' or 'on business' (15%).

The most popular destinations for residents departing on holiday were Indonesia (34%), and the United Kingdom and Ireland (13%).

Of those residents departing to visit friends or relatives overseas, 33% went to the United Kingdom and Ireland and a further 11% went to New Zealand.

2.6 SHORT TERM OVERSEAS RESIDENT DEPARTURES BY AIR: PURPOSE OF JOURNEY: SEPTEMBER QUARTER 1995

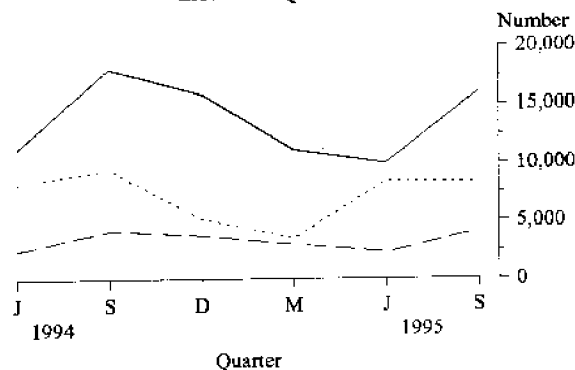
Country of residence	Convention/ business ¹	Visiting friends/ relatives	Holiday	Employment and education	Other and not stated	Total this quarter
Asia						
Hong Kong	0.5	0.4	1.2	0.2	—	2.4
Indonesia ²	1.8	0.6	16.0	1.0	0.3	19.8
Japan	0.1	0.2	0.1	—	—	0.4
Malaysia	1.5	1.2	3.4	0.4	0.2	6.8
Singapore	1.6	1.0	4.2	0.5	0.2	7.5
Thailand	0.4	0.2	5.1	0.1	0.2	5.9
Other Asia	1.6	1.1	1.3	0.2	0.1	4.3
Total Asia	7.5	4.7	31.3	2.5	1.1	47.0
Other						
Germany	—	0.2	0.1	0.1	—	0.4
Italy	0.3	0.5	0.4	—	—	1.3
New Zealand	0.8	1.7	2.7	0.3	0.4	6.0
U.K. and Ireland	1.0	5.0	6.3	0.8	0.3	13.4
U.S.A.	1.2	1.0	3.0	0.3	0.1	5.6
Other	1.9	2.2	3.7	0.9	0.2	9.0
Total Other	5.2	10.7	16.3	2.4	1.1	35.7
Total	12.7	15.3	47.6	4.8	2.2	82.6

¹ From September 1994 includes convention, conference and business.

² Includes Bali

Reference: Unpublished table PMTR0031

SHORT TERM OVERSEAS RESIDENT DEPARTURES BY AIR: PURPOSE OF JOURNEY: HOLIDAY LAST SIX QUARTERS



Source: Unpublished Table PMTR0031

— Indonesia
 Europe
 - - - Singapore

2.7 TOURIST ACCOMMODATION

Period	Hotels, Motels, Guest Houses with facilities			Caravan parks		
	Guest rooms	Room occupancy rates	Guest arrivals	Number of sites	Site occupancy rates	Guest arrivals
	Number	%	000	Number	%	000
Financial years						
1991-92	14 624 ¹	52	1 934.7	28 174 ¹	32	1 260
1992-93	14 577 ¹	53	1 965.2	28 308 ¹	38	1 194
1993-94	14 754 ¹	57	2 153.8	29 202 ¹	39	1 250
Months						
Jul 94		57	189		45	131
Aug 94		59	193		45	127
Sept 94	14 733	65	211	29 353	42	117
Oct 94		68	218		39	107
Nov 94		62	180		35	68
Dec 94	14 734	54	182	29 625	37	100
Jan 95		58	192		45	135
Feb 95		60	156		38	70
Mar 95	14 742	60	178	29 480	37	80
Apr 95		59	182		41	116
May 95		57	173		36	79
Jun 95	14 754	57	166	29 554	40	100
Jul 95		55	178		45	140
Aug 95		61	193		44	138
Sep 95	14 720	68	218	29 828	43	135
Holiday Flats, Units, Houses						
Period	Guest Units	Unit occupancy rates	Unit lettings	Bed Spaces	Visitor Hostels Bed occupancy rates	Bed-nights sold
	Number	%	000	Number	%	000
	Number	%	000	Number	%	000
Financial years						
1991-92	1 895 ¹	53	91	2 683 ¹	34	323
1992-93	1 993 ¹	52	86	3 112 ¹	36	386
1993-94	2 224 ¹	55	96	3 119 ¹	38	416
Months						
Jul 94		58	9		38	36
Aug 94		50	8		34	32
Sept 94	2 255	58	10	3 042	38	34
Oct 94		66	10		39	34
Nov 94		55	9		41	35
Dec 94	2 302	60	10	2 858	42	37
Jan 95		73	10		46	39
Feb 95		58	8		45	35
Mar 95	2 414	56	10	2 794	43	37
Apr 95		63	10		48	40
May 95		45	8		41	36
Jun 95	2 419	45	8	2 834	41	35
Jul 95		56	11		43	36
Aug 95		48	9		38	34
Sep 95	2 439	58	12	2 831	41	35

¹ Number at 30 June.

Reference: Tourist Accommodation, Western Australia (8635.5)

For more information regarding this table, please contact Pam Prince on (09) 360 5932

Analysis of Table 3.1

The seasonally adjusted unemployment rate increased 0.4 percentage points to 8.0% in January 1996. The trend estimate of unemployment increased 0.1 percentage point.

The seasonally adjusted number of persons unemployed increased by 3,000 to 71,000, while the number of persons employed decreased by 6,300 to 819,400.

Western Australia's seasonally adjusted participation rate for January 1996 decreased by 0.4 percentage points to 65.6% and continues to be the highest of all states.

3.1 LABOUR FORCE STATUS (AGED 15 YEARS AND OVER): SEASONALLY ADJUSTED SERIES

Month	Employed full-time	Total employed	Total unemployed	Unemployment rate	Participation rate
	'000	'000	'000	%	%
Males					
Mar 95	423.2	476.4	37.3	7.3	77.4
Apr 95	426.1	479.3	41.2	7.9	78.3
May 95	426.3	476.6	38.7	7.5	77.3
Jun 95	430.3	477.8	36.1	7.0	77.0
Jul 95	432.4	479.7	33.9	6.6	76.8
Aug 95	426.8	474.8	34.4	6.7	76.0
Sep 95	431.9	478.0	37.4	7.3	76.8
Oct 95	429.8	477.8	36.5	7.1	76.5
Nov 95	428.6	479.8	37.1	7.2	76.8
Dec 95	423.3	476.2	38.6	7.5	76.3
Jan 96	423.0	475.1	41.6	8.1	76.5
Females					
Mar 95	188.3	350.3	26.9	7.1	56.3
Apr 95	196.7	359.0	24.8	6.5	57.2
May 95	194.8	358.5	27.7	7.2	57.5
Jun 95	186.0	351.2	29.2	7.7	56.5
Jul 95	185.2	351.9	32.6	8.5	57.0
Aug 95	192.9	355.8	27.4	7.2	56.7
Sep 95	190.6	349.0	30.8	8.1	56.1
Oct 95	187.5	351.7	29.0	7.6	56.1
Nov 95	189.4	353.1	32.1	8.3	56.7
Dec 95	183.9	349.5	29.4	7.8	55.7
Jan 96	186.2	344.3	29.4	7.9	54.8
Persons					
Mar 95	611.5	826.7	64.2	7.2	66.8
Apr 95	622.8	838.3	66.1	7.3	67.7
May 95	621.0	835.1	66.4	7.4	67.4
Jun 95	616.3	829.0	65.3	7.3	66.7
Jul 95	617.6	831.6	66.5	7.4	66.9
Aug 95	619.7	830.6	61.8	6.9	66.3
Sep 95	622.5	827.0	68.2	7.6	66.4
Oct 95	617.3	829.4	65.5	7.3	66.3
Nov 95	618.0	832.8	69.2	7.7	66.7
Dec 95	607.2	825.8	68.0	7.6	65.9
Jan 96	609.1	819.4	71.0	8.0	65.6

Reference: The Labour Force, Australia (6202.0)

Analysis of Table 3.2

3.2 LABOUR FORCE STATUS (AGED 15 YEARS AND OVER): TREND SERIES

For more information regarding these tables, please contact Renae Gibson on (09) 360 5332.

Month	Employed full-time	Total employed	Total unemployed	Unemployment rate	Participation rate
	'000	'000	'000	%	%
Males					
Mar 95	422.2	474.7	40.6	7.9	77.6
Apr 95	425.1	476.3	39.5	7.7	77.6
May 95	427.4	477.3	38.1	7.4	77.4
Jun 95	429.2	477.9	36.6	7.1	77.1
Jul 95 r	430.4	478.1	35.6	6.9	76.8
Aug 95r	430.5	477.9	35.4	6.9	76.6
Sep 95r	429.8	477.7	35.9	7.0	76.5
Oct 95r	428.7	477.6	36.8	7.1	76.5
Nov 95r	427.3	477.4	37.8	7.3	76.5
Dec 95r	425.7	477.0	38.9	7.5	76.5
Jan 96	424.3	476.6	39.9	7.7	76.4
Females					
Mar 95	190.9	352.5	26.2	6.9	56.6
Apr 95	191.5	354.3	26.9	7.1	56.8
May 95	191.4	355.1	27.8	7.3	57.0
Jun 95	190.8	354.8	28.7	7.5	56.9
Jul 95r	190.0	354.0	29.5	7.7	56.8
Aug 95r	189.3	352.9	30.0	7.8	56.7
Sep 95r	188.8	352.0	30.2	7.9	56.4
Oct 95r	188.4	351.2	30.1	7.9	56.2
Nov 95r	187.7	350.2	30.1	7.9	56.0
Dec 95r	187.0	349.1	30.0	7.9	55.7
Jan 96	186.1	347.9	29.8	7.9	55.4
Persons					
Mar 95	613.1	827.2	66.8	7.5	67.1
Apr 95	616.5	830.6	66.4	7.4	67.1
May 95	618.8	832.4	65.9	7.3	67.1
Jun 95	620.0	832.7	65.3	7.3	67.0
Jul 95r	620.4	832.1	65.1	7.3	66.8
Aug 95r	619.8	830.8	65.4	7.3	66.6
Sep 95r	618.7	829.7	66.0	7.4	66.4
Oct 95 r	617.1	828.8	66.9	7.5	66.3
Nov 95r	615.0	827.6	67.9	7.6	66.2
Dec 95r	612.7	826.2	68.9	7.7	66.0
Jan 96	610.4	824.5	69.7	7.8	65.9

Reference: The Labour Force, Australia (6202.0)

Analysis of Table 3.3

The total number of employees rose from 550,500 in March 1994 to 558,800 in March 1995. During this twelve month period, the public sector total number of employees rose by 3,600 to 157,600, and the private sector total number of employees showed an increase of 4,800 to 401,300.

3.3 NUMBER OF EMPLOYED WAGE AND SALARY EARNERS BY INDUSTRY AND SECTOR

Particulars	Number of Employees				Gross earnings
	Mar 1994	Sept 1994	Dec 1994	Mar 1995	Mar quarter 1995
	'000	'000	'000	'000	\$m
INDUSTRY					
Mining	20.6	20.7	21.5	23.8	323.5
Manufacturing	58.5	59.7	57.0	56.7	449.9
Electricity, gas and water	8.7	8.4	8.2	8.0	69.1
Construction	28.3	26.0	26.3	28.0	246.6
Wholesale trade	39.9	38.9	38.1	40.0	301.0
Retail trade	78.8	81.8	82.5	80.9	334.9
Transport and storage	22.3	22.2	21.8	21.7	204.5
Communication	8.2	8.5	8.7	8.8	79.4
Finance, property and business	60.8	63.4	66.3	64.2	493.9
Public administration and defence	29.5	29.9	31.7	30.1	226.5
Community services	144.9	149.1	151.1	152.3	970.9
Recreation, personal and other services	48.4	42.3	44.1	42.8	193.9
Total all industries¹	550.5	552.2	558.8	558.8	3 906.2
SECTOR					
Private	396.5	398.9	398.8	401.3	2 692.4
Government					
Commonwealth	22.0	21.5	22.1	22.3	198.6
State	118.7	118.5	125.3	122.7	937.0
Local	13.3	13.3	12.7	12.6	78.3
Total Government	154.0	153.2	160.1	157.6	1 213.8
Total all sectors	550.5	552.2	558.8	558.8	3 906.2

Particulars	FEBRUARY 1994			FEBRUARY 1995		
	Males	Females	Persons	Males	Females	Persons
INDUSTRY						
Mining	18.4	2.9	21.3	20.6	3.4	24.0
Manufacturing	46.2	13.7	59.9	44.0	13.2	57.2
Electricity, gas and water	7.8	0.9	8.8	7.0	1.0	8.0
Construction	22.9	5.6	28.5	23.1	4.1	27.2
Wholesale trade	28.1	11.7	39.8	27.5	12.9	40.4
Retail trade	33.0	44.1	77.1	33.4	46.5	80.0
Transport and storage	17.9	4.4	22.3	16.1	5.6	21.7
Communication	5.8	2.4	8.3	6.0	2.7	8.8
Finance, property and business	28.6	32.7	61.2	29.4	34.3	63.7
Public administration and defence	17.9	11.6	29.5	17.7	12.4	30.1
Community services	49.3	92.6	141.9	43.8	101.2	145.0
Recreation, personal and other services	19.7	26.6	46.3	18.1	24.9	43.0
Total all industries¹	296.9	249.7	546.5	287.9	262.6	550.5
SECTOR						
Private	218.2	175.5	393.8	211.8	187.8	399.6
Government						
Commonwealth	13.8	9.0	22.8	13.1	9.1	22.2
State	56.4	60.2	116.6	55.3	61.0	116.2
Local	8.4	4.8	13.3	7.8	4.7	12.5
Total Government	78.6	74.1	152.7	76.1	74.8	150.9
Total all sectors	296.9	249.7	546.5	287.9	262.6	550.5

¹ Includes employees of government agencies classified to Agriculture, forestry, fishing and hunting.

Reference: Employed Wage and Salary Earners (6248.0)

Analysis of Table 3.4

Over the past twelve months to August 1995, Western Australian average weekly ordinary time earnings for full-time adult persons increased by 6.6% compared with 5.1% for Australia.

Western Australian average weekly total earnings for full-time adult persons in August 1995 were \$702.90, while the comparable Australian average earnings in August 1995 were \$691.20.

3.4 AVERAGE WEEKLY EARNINGS OF EMPLOYEES

Reference period	Males		All Males Total earnings
	Full Time Adults		
	Ordinary time earnings	Total earnings	
			(dollars)
20 May 94	663.70	717.00	622.70
19 Aug 94	682.30	734.70	643.80
18 Nov 94	692.40	758.00	663.70
17 Feb 95	695.50	758.60	655.20
19 May 95	701.80	764.20	656.60
18 Aug 95	716.80	776.20	677.00

Reference period	Females		All Females Total earnings
	Full Time Adults		
	Ordinary time earnings	Total earnings	
			(dollars)
20 May 94	524.10	539.10	384.70
19 Aug 94	515.10	528.10	381.80
18 Nov 94	523.70	538.40	398.50
17 Feb 95	536.90	553.60	405.20
19 May 95	541.80	557.40	403.90
18 Aug 95	555.90	568.70	401.30

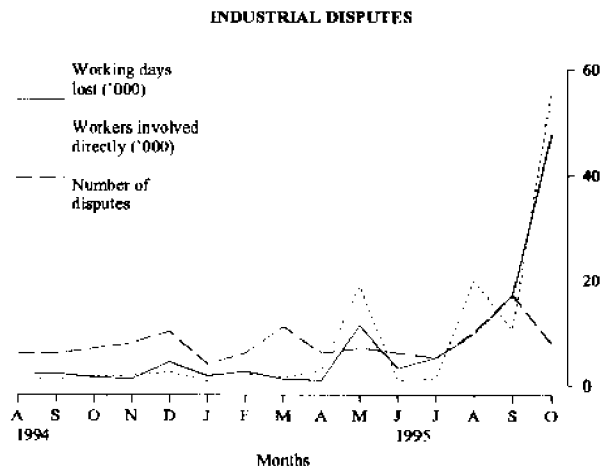
Reference period	Persons		All employees Total earnings
	Full Time Adults		
	Ordinary time earnings	Total earnings	
			(dollars)
20 May 94	612.30	651.50	507.70
19 Aug 94	619.30	656.90	516.20
18 Nov 94	630.10	676.90	538.80
17 Feb 95	637.50	683.60	537.10
19 May 95	645.80	691.90	539.90
18 Aug 95	660.00	702.90	544.40

Reference: Average Weekly Earnings, States and Australia, (6302.0)

3.5 INDUSTRIAL DISPUTES CAUSING STOPPAGE OF WORK

Period	Number of disputes	Workers Involved		Total	Working days lost
		Directly	Indirectly		
	Number	'000	'000	'000	'000
Calendar year					
1992	134	28.6	0.2	28.8	53.6
1993	111	27.4	0.2	27.6	29.5
1994	82	15.7	0.2	15.9	27.4
Months					
Aug 94	6	1.2	—	1.2	1.9
Sep 94	6	1.0	—	1.0	2.1
Oct 94	7	1.7	—	1.7	1.4
Nov 94	8	1.8	—	1.8	1.0
Dec 94	10	2.4	0.1	2.5	4.4
Jan 95	4	0.6	—	0.6	1.6
Feb 95	6	1.9	—	1.9	2.5
Mar 95	11	1.4	—	1.4	1.0
Apr 95	6	2.8	—	2.8	0.8
May 95	7	18.8	—	18.8	11.2
Jun 95	6	0.8	—	0.8	3.1
Jul 95	5	1.1	—	1.1	5.1
Aug 95	6	19.8	—	19.8	9.7
Sep 95	12	10.4	—	10.4	17.0
Oct 95	8	55.5	—	55.5	47.6

Reference: Industrial Disputes, Unpublished ABS Data.



Analysis of Table 4.1

4.1 MONTHLY RETAIL TURNOVER : ORIGINAL ESTIMATES

Data in this table have been revised and now show data from the redesigned retail Business Survey. see Information Paper (8511.0) issued on 1 December 1994 or Retail Trade Australia (8501.0) for more detail on the survey redesign.

Estimated turnover of Western Australian retail establishments during December 1995 was \$1 367.4 million (at current prices), an increase of 28.2% over the previous month. The trend estimates show an increase of 0.5% over the previous month.

From December 1994 to December 1995, trend estimates indicate a national annual growth rate of 8.0%. The annual growth rate for Western Australia for the same period was 8.9%.

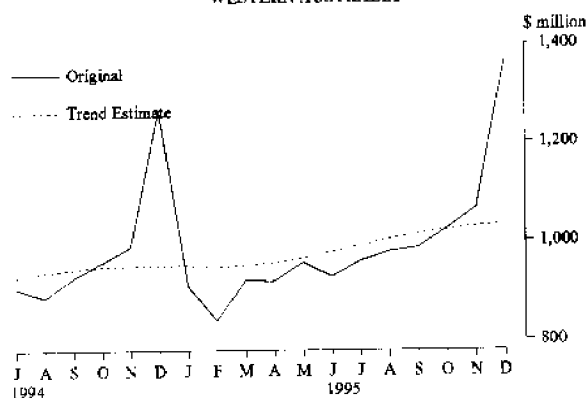
The national trend estimates show increases of 0.5%, 0.4% and 0.3% for the months of October, November and December 1995. For the same three months, Western Australia recorded increases of 0.8%, 0.7% and 0.5% respectively.

Months	Food	Department stores	Clothing and soft goods stores	Other Household goods	Recreational goods
Dec 94	481.9	176.7	87.7	143.3	77.1
Jan 95	398.9	76.3	55.8	106.4	48.9
Feb 95	381.2	68.5	48.6	93.2	41.0
Mar 95	418.6	76.2	54.5	101.9	44.4
Apr 95	404.9	91.9	58.7	96.6	45.2
May 95	407.6	99.7	67.8	111.7	46.5
Jun 95	403.5	91.5	63.6	111.3	43.6
Jul 95	414.4	85.9	60.9	106.3	53.0
Aug 95	431.2	89.0	59.1	105.2	53.1
Sep 95	430.0	84.7	61.1	109.4	52.5
Oct 95	436.2	93.2	64.3	122.3	54.2
Nov 95	452.7	107.4	66.5	129.8	58.9
Dec 95	532.9	182.0	86.3	163.4	88.6

Months	Other	Hospitality and services	Totals		
			Original	Seasonally adjusted	Trend estimates
Dec 94	113.4	186.1	1 266.2	950.1	950.8
Jan 95	68.0	156.6	910.9	952.4	949.6
Feb 95	63.1	144.2	839.8	945.7	948.8
Mar 95	69.0	157.4	922.0	949.2	950.6
Apr 95	66.4	155.4	919.1	953.1	956.1
May 95	73.4	149.2	955.9	966.1	965.8
Jun 95	65.3	149.4	928.2	974.2	978.5 r
Jul 95	70.6	167.9	959.0	984.8	992.1 r
Aug 95	77.4	163.6	978.6	1 026.8	1 004.7 r
Sep 95	79.9	169.9	987.5	1 006.7	1 015.1 r
Oct 95	79.3	174.7	1 024.2	1 034.0	1 023.7 r
Nov 95	80.7	170.4	1 066.4	1 015.6	1 030.6 r
Dec 95	123.0	191.2	1 367.4	1 041.8	1 035.8

Reference: Retail Trade, Australia (8501.0)

MONTHLY RETAIL TURNOVER
WESTERN AUSTRALIA



Source: Retail Trade, Australia (8501.0)

4.2 CONSUMER PRICE INDEX: PERTH

Analysis of Table 4.2

The All Groups Consumer Price Index (CPI) Perth increased by 0.6% between the September and December quarters 1995.

Major contributors to the change from the September quarter 1995 to the December quarter 1995 were tobacco and alcohol, holiday travel and accommodation in Australia, mortgage interest charges and hospital and medical services, automotive fuel, fresh fruit and vegetables, and motor vehicles

The increase in the CPI from December 1994 to December 1995 was 4.8%.

Contributing most to the annual increase were housing (up 9.8%); transportation (up 5.0%); food (up 3.9%); tobacco and alcohol (up 7.1%); health and personal care (up 6.9%) and recreation and education (up 4.0%).

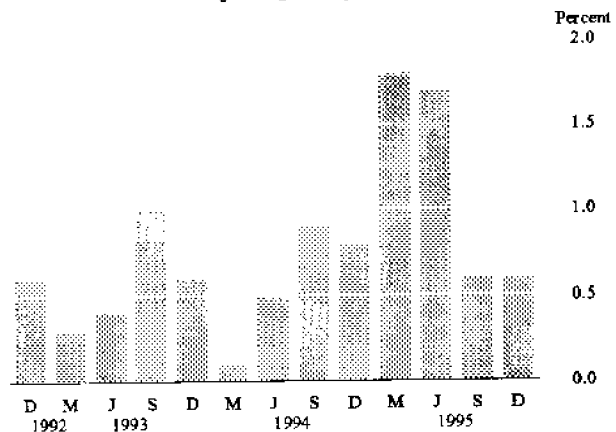
Period	Food	Clothing	Housing	Household equipment and operation	Transportation
(Base of each index: Year 1989-90 = 100.0)					
1992-93	108.8	108.6	87.9	107.4	111.2
1993-94	110.0	108.2	87.3	108.2	114.4
1994-95	113.4	107.4	94.0	109.0	119.0
1994					
Jun qtr	109.9	108.5	87.8	107.9	116.0
Sep qtr	111.6	107.9	88.5	108.3	117.9
Dec qtr	111.4	107.4	91.8	109.0	117.2
1995					
Mar qtr	115.1	106.9	96.9	108.9	119.3
Jun qtr	115.7	107.5	99.0	110.0	121.4
Sep qtr	116.6	106.9	100.0	110.5	123.4
Dec qtr	115.8	107.3	100.8	110.9	123.1

Reference: Consumer Price Index (6401.0)

Period	Tobacco and alcohol	Health and personal care	Recreation and education	All groups
(Base of each index: Year 1989-90 = 100.0)				
1992-93	114.0	119.8	106.7	106.2
1993-94	128.8	123.8	107.6	108.5
1994-95	136.8	130.4	109.6	112.3
1994				
Jun qtr	131.8	125.5	107.5	109.1
Sep qtr	133.6	127.6	107.7	110.1
Dec qtr	135.9	128.4	109.4	111.0
1995				
Mar qtr	137.7	130.1	109.0	113.0
Jun qtr	140.2	135.7	112.3	114.9
Sep qtr	140.6	135.7	112.1	115.6
Dec qtr	145.6	137.2	113.8	116.3

Reference: Consumer Price Index (6401.0)

CPI ALL GROUPS: PERTH
Percentage change from previous quarter



Analysis of Table 5.1

The number of houses approved in December 1995 decreased by 24.7% when compared with November 1995 and decreased by 37.7% when compared with December 1994. The number of total dwelling units approved in December 1995 decreased by 27.8% when compared with November 1995 and decreased by 46.4% when compared with December 1994.

The Building Approvals trend series for houses peaked at 1,670 in April 1994 and since that time has steadily declined to a level of 969 in December 1995.

For more information about this table, call Peter Hodgson on (09) 360 5180

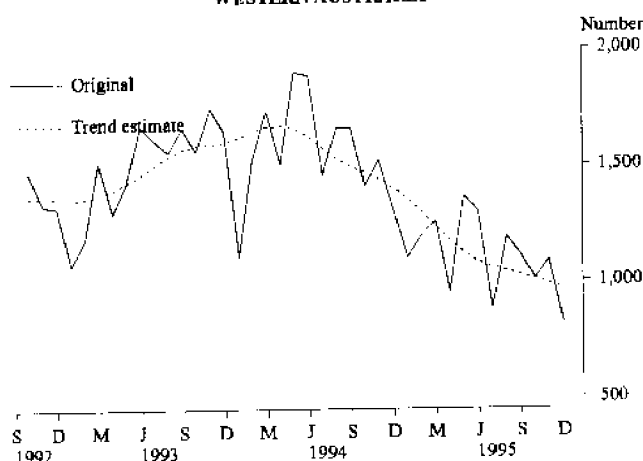
5.1 NEW RESIDENTIAL BUILDING APPROVED

Period	Houses		Other Residential Buildings		Total ¹	
	Dwelling Units	Value	Dwelling Units	Value	Dwelling Units	Value
	Number	\$m	Number	\$m	Number	\$m
Financial years						
1992-93	16 485	1 173.7	5 994	345.7	22 568	1 519.4
1993-94	19 437	1 503.7	7 144	461.0	26 776	1 964.7
1994-95	16 207	1 354.3	6 105	420.3	22 427	1 774.6
Months						
Oct 94	1 415	113.6	453	31.7	1 878	145.3
Nov 94	1 522	129.0	602	40.4	2 149	169.3
Dec 94	1 314	110.1	526	33.3	1 856	143.4
Jan 95	1 100	90.6	431	25.8	1 535	116.4
Feb 95	1 195	102.0	383	26.8	1 586	129.0
Mar 95	1 258	111.0	496	39.0	1 761	150.4
Apr 95	952	81.7	222	16.1	1 180	97.9
May 95	1 367	115.2	426	35.7	1 794	151.0
Jun 95	1 301	109.0	491	35.3	1 795	144.3
Jul 95	883	77.8	316	23.1	1 203	100.9
Aug 95	1 189	104.8	399	30.6	1 596	135.4
Sep 95	1 111	99.2	293	22.9	1 410	122.1
Oct 95	1 008	96.6	253	20.4	1 265	117.0
Nov 95	1 087	99.1	286	22.7	1 378	121.8
Dec 95	819	79.5	170	12.9	995	147.5

¹ Includes conversions

Reference: Building Approvals, Western Australia (8731.5)

NEW HOUSES APPROVED
WESTERN AUSTRALIA



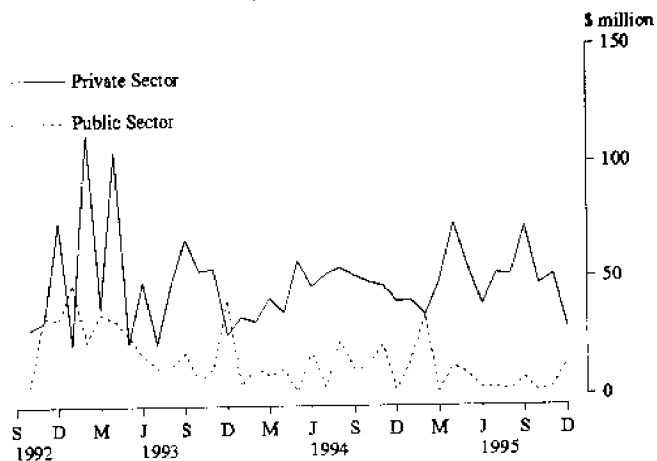
Source: Building Approvals, Western Australia (8731.5)

5.2 NON-RESIDENTIAL BUILDING APPROVED

Period	Private	Public	Total
	(\$ million)		
Financial years			
1992-93	591.3	298.3	889.6
1993-94	513.1	153.9	667.0
1994-95	580.9	147.3	728.2
Months			
Oct 94	48.3	11.9	60.2
Nov 94	46.4	21.6	68.0
Dec 94	39.9	2.1	42.0
Jan 95	40.5	14.3	54.8
Feb 95	34.2	34.1	68.0
Mar 95	48.2	1.9	50.1
Apr 95	73.6	12.2	85.8
May 95	54.7	8.6	63.3
Jun 95	38.5	3.1	41.6
Jul 95	51.9	3.2	55.1
Aug 95	51.0	2.2	53.2
Sep 95	72.2	6.8	79.0
Oct 95	47.1	1.4	48.5
Nov 95	51.2	3.4	54.7
Dec 95	28.7	14.2	42.9

Reference: Building Approvals, Western Australia (8731.5)

NON-RESIDENTIAL BUILDING APPROVED
WESTERN AUSTRALIA

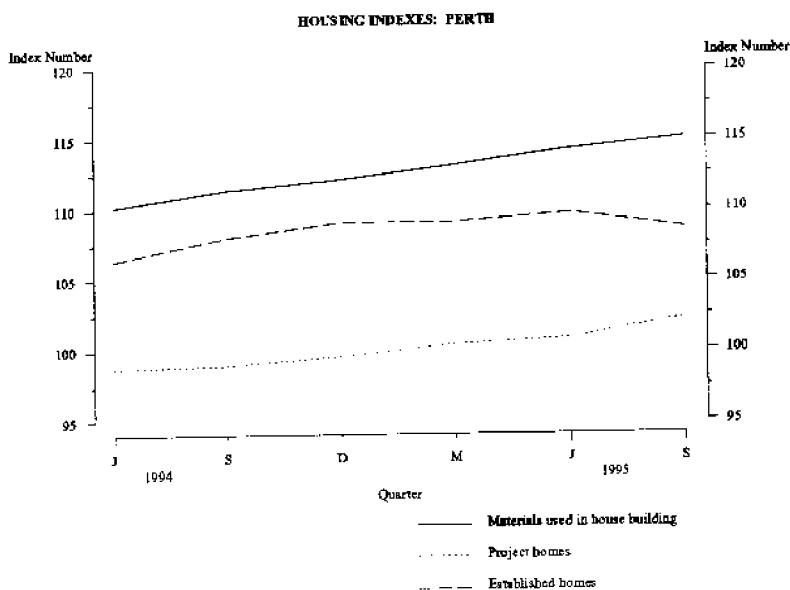


Source: Building Approvals, Western Australia (8731.5)

5.3 SELECTED HOUSING PRICE INDEXES: PERTH

Period	Materials used in house building	Project homes		Established homes
		(Base of each index 1989-90 = 100.0)		
1992-93	106.9	92.8	98.4	
1993-94	109.1	96.2	104.7	
1994-95	112.7	100.0	109.0	
1994				
Jun qtr	110.2	98.8	106.4	
Sep qtr	111.4	99.0	108.0	
Dec qtr	112.1	100.0	109.1	
1995				
Mar qtr	113.1	100.4	109.1	
Jun qtr	114.2	100.8	109.7	
Sep qtr	115.0	102.2	108.6	

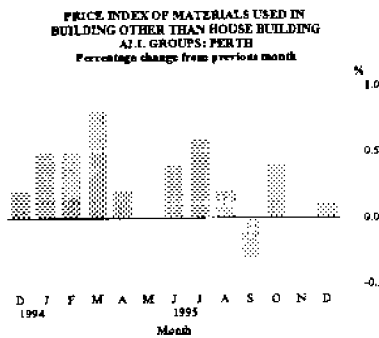
References: Price Index of Materials Used in House Building (6408.0); House Price Indexes, (6416.0)



5.4 PRICE INDEX OF MATERIALS USED IN BUILDING OTHER THAN HOUSE BUILDING: PERTH

Period	All groups	Special Combinations of Building Materials		
		Electrical materials	Mechanical services	Plumbing materials
(Base of each index 1989-90 = 100)				
1992-93	105.7	105.7	103.7	103.7
1993-94	107.1	101.9	104.2	105.1
1994-95	110.1	107.3	106.8	114.4
1994				
October	109.0	103.7	105.5	113.3
November	109.3	105.2	105.7	116.1
December	109.5	107.7	105.8	115.0
1995				
January	110.0	109.1	106.1	115.3
February	110.5	109.4	107.3	115.3
March	111.4	109.4	108.5	115.5
April	111.6	110.2	109.0	115.3
May	111.6	110.2	108.9	116.8
June	112.0	112.0	109.3	118.7
July	112.7	112.6	109.9	120.4
August	112.9	113.1	109.8	121.0
September p	112.6	113.2	109.8	119.9
October p	113.1	112.9	111.5	120.7
November p	113.1	112.6	112.1	120.0
December p	113.2	112.6	112.3	119.8

Reference: Price Index of Materials Used in Building Other Than House Building (6407.0)



Period	Selected Major Building Materials				
	Structural timber	Clay bricks	Ready mixed concrete	Structural steel	Aluminium windows
(Base of each index 1989-90 = 100)					
1992-93	102.7	111.3	115.5	96.3	103.8
1993-94	110.6	113.9	116.6	100.4	104.4
1994-95	110.6	118.0	117.8	103.6	112.4
1994					
October	111.7	117.8	118.3	103.4	108.8
November	111.8	117.8	117.8	103.4	109.4
December	109.7	117.8	117.3	103.4	109.4
1995					
January	109.8	117.8	117.3	103.7	112.3
February	109.7	117.8	117.2	103.7	112.3
March	109.7	117.8	117.5	103.7	118.2
April	109.8	117.8	117.5	103.7	118.2
May	110.0	120.2	115.9	103.8	118.2
June	109.9	120.2	116.0	103.8	118.2
July	109.9	120.2	116.0	105.7	118.2
August	109.7	120.2	117.8	106.0	118.2
September	109.7	120.2	115.0	105.9	118.2
October p	109.6	120.2	115.0	106.9	118.2
November p	109.8	120.2	114.6	107.3	118.2
November p	109.8	120.2	114.6	107.3	118.2
December p	109.6	120.2	114.4	107.7	118.2

Reference: Price Index of Materials Used in Building Other Than House Building (6407.0)

Analysis of Table 6.1

All livestock slaughtering with the exception of pigs showed a decrease during 1994-95

6.1 LIVESTOCK SLAUGHTERED

Period	Cattle						Pigs
	Bulls, bullocks, steers	Cows, heifers	Total	Calves	Sheep	Lambs	
'000							
Financial years							
1992-93	272	180	452	5	3 752	1 481	568
1993-94	271	168	439	4	2 952	1 553	550
1994-95	243	186	430	4	2 392	1 262	603
Months							
Nov 94	25	16	41	—	196	83	53
Dec 94	26	20	46	—	231	122	49
Jan 95	20	17	37	—	220	91	43
Feb 95	19	17	36	—	217	114	46
Mar 95	23	17	41	—	242	117	53
Apr 95	14	15	29	—	192	98	51
May 95	18	15	33	—	198	96	56
Jun 95	18	10	29	—	145	62	58
Jul 95	17	12	29	—	145	54	53
Aug 95	19	15	34	—	191	92	52
Sep 95	17	18	35	—	162	150	50
Oct 95	22	18	40	—	195	153	51
Nov 95	28	16	43	—	232	127	48
Dec 95	23	17	40	—	196	79	49

Reference: Livestock Products (7215.0)

6.2 MEAT PRODUCED

Period	Beef	Veal	Mutton	Lamb	Pigmeat
tonnes					
Financial years					
1992-93	100 196	303	76 921	23 395	33 562
1993-94	101 513	296	61 731	24 936	32 423
1994-95p	96 920	285	47 002	19 250	36 914
Months					
Nov 94	9 348	23	3 849	1 220	2 990
Dec 94	10 569	26	4 777	1 866	3 113
Jan 95	8 421	33	4 344	1 437	2 500
Feb 95	8 270	22	4 273	1 834	2 580
Mar 95	9 373	25	4 740	1 717	3 233
Apr 95	6 501	17	3 633	1 480	3 372
May 95	7 332	16	3 880	1 410	3 713
Jun 95	6 179	14	2 891	856	3 835
Jul 95	6 130	17	2 843	925	3 288
Aug 95	7 515	19	3 822	1 609	3 227
Sep 95	7 872	16	3 094	2 494	3 144
Oct 95	9 292	17	3 875	2 438	3 187
Nov 95	10 126	18	4 394	2 062	2 957
Dec 95	9 066	17	3 926	1 200	3 103

Reference: Livestock Products (7215.0)

Analysis of Table 6.2

Numbers of lambs are declining due to uncertainty regarding future markets.

For more information regarding these tables, please contact Peter Hodgson on (09) 360 5180.

6.3 WOOL RECEIVALS¹ and LIVE SHEEP EXPORTS

Period	Receivels of taxable wool by brokers and dealers		Export of live sheep		
			Number	Gross Value	Unit Value
	bales	tonnes	'000	\$'000	\$
Financial years					
1992-93	1 115 307	198 756	3 681.0	89 079	24.20
1993-94	1 196 990	212 670	4 520.9	127 448	28.19
1994-95	972 837	172 575	3 780.7	125 101	33.09
Months					
Nov 94	87 127	12 097	347.7	9 578	27.55
Dec 94	31 807	5 522	284.9	9 517	33.40
Jan 95	59 841	10 640	376.4	12 608	33.49
Feb 95	84 274	15 167	345.2	11 816	34.23
Mar 95	90 219	16 114	336.7	11 016	32.72
Apr 95 r	53 151	9 478	496.7	17 622	35.49
May 95	39 129	6 883	282.1	10 428	36.97
Jun 95	30 142	5 333	179.3	6 855	38.22
Jul 95	53 827	9 633	515.6	21 397	41.50
Aug 95	125 252	22 417	426.9	17 840	41.79
Sep 95	110 924	19 676	417.0	16 300	39.09
Oct 95	118 670	21 125	269.4	9 705	36.02
Nov 95	87 164 r	15 531 r	320.4	10 463	32.65
Dec 95	n.y.a.	n.y.a.	344.4	13 158	38.20

¹ Source: National Council of Wool Selling Brokers

Reference: FTRACCS Trade Statistics

For more information regarding these tables, please contact Pam Prince on (09) 360 5207

6.4 ENERGY PRODUCTION

Period	Coal ¹	Electricity generated	Gas for distribution ²	Crude oil ^{3,4}	Natural gas ⁴
	'000 tonnes	million kWh	million MJ	mega-litres	million m ³
Financial years					
1991-92	5 491	14 626	149 534	7 350	10 496
1992-93	5 428	15 007	156 349	6 693	11 923
1993-94	5 151	15 755	172 432	7 639	13 659
Months					
Dec 94	517	1 472	9 462	3 275	3 898
Jan 95	468	1 511	11 057		
Feb 95	503	1 387	12 900		
Mar 95	555	1 465	13 878	2 918	4 048
Apr 95	580	1 351	13 951		
May 95	518	1 423	14 466		
Jun 95	547	1 389	14 865	3 210	3 682
Jul 95	391	1 447	15 564		
Aug 95	368	1 455	15 474		
Sep 95	567	1 370	14 543	3 421	4 396
Oct 95	496	1 399	15 441		
Nov 95	455	1 394	14 709		
Dec 95	613	1 477	14 416	n.y.a.	n.y.a.

¹ Source: Department of Mines.

² Available for issue through mains.

³ Includes condensate.

⁴ Source: Australian Bureau of Agricultural and Resource Economics.

Analysis of Table 6.5

Gold exploration figures showed an increase of 36% from March to June.

For more information regarding these tables, please contact Pam Prince on (09) 360 5207.

6.5 MINERAL EXPLORATION: EXPENDITURE BY TYPE OF MINERAL SOUGHT

Period	Metallic Minerals			Non-Metallic Minerals		Total minerals
	Base metals ¹	Gold	Other	Diamonds	Other	
	(\$ million)					
Financial years						
1992-93	60.0	221.2	35.0	29.0	2.9	348.1
1993-94	63.3	310.2	31.5	46.6	2.1	453.7
1994-95	58.8	379.4	17.9	35.2	5.6	496.5
Quarters						
Jun 94	15.9	90.2	4.2	12.6	0.6	123.4
Sep 94	13.0	94.3	5.5	14.0	0.7	127.5
Dec 94	14.5	97.4	4.9	9.4	0.3	126.4
Mar 95	17.2	79.5	3.4	5.1	0.6	106.3
June 95	14.1	108.2	4.0	5.8	0.6	136.3
Sep 95	16.6	90.4	4.5	9.7	2.4	124.9

¹ Includes copper, lead, zinc, silver, nickel and cobalt.

Reference: Actual and Expected Private Mineral Exploration Expenditure, Australia (8412.0)

6.6 MINERAL PRODUCTION

Period	Iron ore	Bauxite	Gold	Ilmenite	Nickel	Diamonds
	'000 tonnes	'000 tonnes	kg	'000 tonnes	'000 tonnes	'000 carats
Financial years						
1992-93	112 259	26 681	179 615	1 706	64	42 199
1993-94	119 689	27 087	193 599	1 612	63 r	39 909
1994-95	132 743	26 852	187 579	1 470	94	43 591
Quarters						
Jun 94	31 324	6 719	49 665	403	16 r	8 279
Sep 94	32 781	6 706	47 095	410	19 r	12 864
Dec 94	32 958	6 761	47 789	368 r	23 r	11 292
Mar 95	32 265	6 657	45 395	344 r	25	10 111 r
Jun 95	34 739	6 729	47 300 r	348 r	27 r	9 324
Sep 95	36 459	7 451	49 100	405	25	9 104

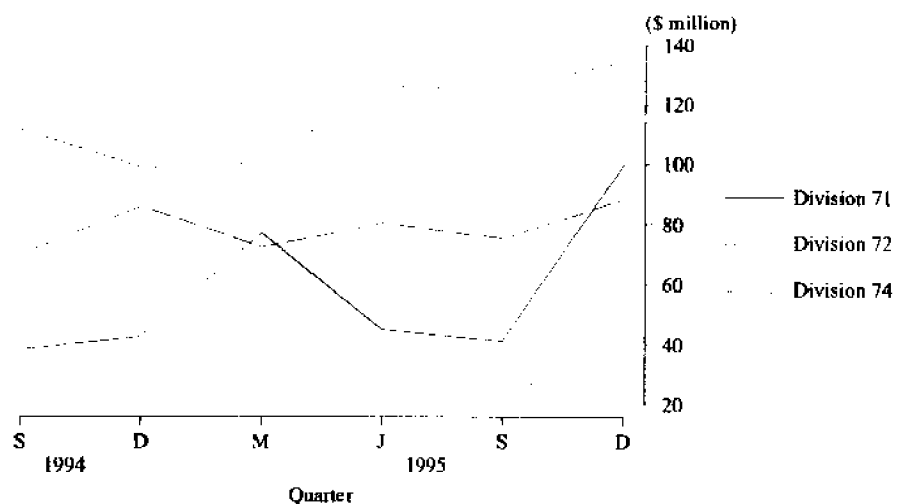
Source: Australian Bureau of Agricultural and Resource Economics

7.1 IMPORTS BY SELECTED DIVISION

Period	33 Petroleum, petroleum products, etc	71 Power generating equipment and machinery	72 Machinery specialised for particular industries	74 General industrial machinery and equipment	78 Road vehicles
(\$ million)					
Financial years					
1992-93	912.0	172.0	650.2	215.2	538.3
1993-94	678.4	189.7	432.2	254.0	690.0
1994-95	823.8	203.1	436.9	308.7	802.1
Quarters					
Sep 94	207.9	38.4	111.6	70.1	168.8
Dec 94	176.0	42.7	98.7	85.9	223.5
Mar 95	187.8	77.0	100.8	72.3	158.1
Jun 95	252.1	45.0	125.8	80.4	251.6
Sep 95	185.3	41.4	124.7	75.2	212.6
Dec 95	185.6	99.9	134.5	88.4	213.1

Reference: FTRACCS Trade Statistics

IMPORTS BY SELECTED DIVISIONS



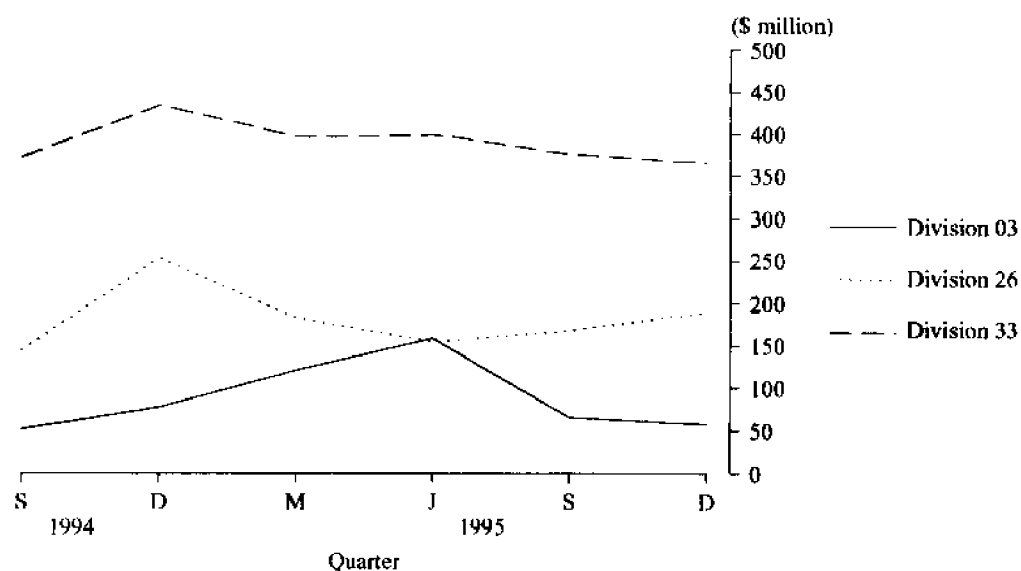
Source: FTRACCS Trade Statistics

7.2 EXPORTS BY SELECTED DIVISIONS

Period	03 Fish, crustaceans, molluscs, etc	04 Cereals and cereal preparations	26 Textile fibres and waste (excluding yarn or fabric)	28 Metaliferous ores and metal scrap	33 Petroleum, petroleum products etc.
(\$ million)					
Financial years					
1992-93	359.0	1 294.9	611.4	3 261.1	967.0
1993-94	413.3	1 150.1	656.1	2 999.4	882.9
1994-95	408.6	1 154.3	733.8	3 094.0	1 544.4
Quarters					
Sep 94	51.9	255.5	144.5	723.2	372.3
Dec 94	77.4	292.0	252.6	727.9	434.2
Mar 95	120.7	323.4	182.0	752.4	396.4
Jun 95	158.7	283.4	154.1	890.6	398.8
Sep 95	66.1	286.5	169.0	827.8	379.8
Dec 95	58.1	497.9	189.6	807.1	366.3

Reference: FTRACCS Trade Statistics

EXPORTS BY SELECTED DIVISIONS



Source: FTRACCS Trade Statistics

Analysis of Table 8.1

New Motor Vehicle Registrations for December 1995 showed a total decrease of 8.8% from November 1995 due to seasonal factors.

For more information regarding these tables, please contact Cheryl Smith on (09) 360 5242

8.1 NEW MOTOR VEHICLE REGISTRATIONS¹

Period	Western Australia				Total	Perth Statistical Division
	Passenger vehicles	Light commercial vehicles	Trucks and buses	Motor cycles and scooters		
Financial years						
1992-93	45 567	9 581	1 975	2 117	59 240	46 593
1993-94	48 589	10 350	2 136	2 103	63 178	49 074
1994-95	51 947	10 782	2 170	2 344	67 243	52 168
Months						
Nov 94	4 659	1 071	199	257	6 186	4 763
Dec 94	4 353	835	191	260	5 639	4 469
Jan 95	4 047	803	166	207	5 223	3 950
Feb 95	3 933	906	171	176	5 189	3 989
Mar 95	4 434	1 006	153	217	5 810	4 597
Apr 95	3 400	785	173	150	4 508	3 332
May 95	5 046	1 076	205	173	6 500	5 040
Jun 95	5 025	1 258	248	159	6 690	4 984
Jul 95	3 704	769	198	156	4 827	3 635
Aug 95	4 395	771	235	192	5 593	4 405
Sep 95	4 021	738	209	187	5 155	4 119
Oct 95	4 111	812	175	201	5 299	4 136
Nov 95	4 595	945	247	365	6 148	4 887
Dec 95	4 308	884	207	209	5 608	4 249

¹ Excludes plant and equipment, caravans and trailers
Reference: Unpublished statistics

Analysis of Table 8.2

The total trend level has risen in the last two months although the December 1995 figure is 3.8% below the peak in May 1995.

For more information regarding these tables, please contact Cheryl Smith on (09) 360 5242

8.2 VEHICLE REGISTRATION STATISTICS¹

Period	Passenger Vehicles		Other Vehicles		Total	
	Original	Trend estimate	Original	Trend estimate	Original	Trend estimate
Months						
Nov 94	4 659	4 328	1 270	1 066	5 929	5 394
Dec 94	4 353	4 307	1 026	1 077	5 379	5 384
Jan 95	4 047	4 292	969	1 079	5 016	5 371
Feb 95	3 933	4 306	1 077	1 081	5 010	5 387
Mar 95	4 434	4 341	1 159	1 087	5 593	5 428
Apr 95	3 400	4 376	958	1 099	4 358	5 475
May 95	5 046	4 381	1 281	1 110	6 327	5 491
Jun 95	5 025	4 320 r	1 270	1 114 r	6 531	5 434 r
Jul 95	3 704	4 271 r	967	1 106 r	4 671	5 377 r
Aug 95	4 395	4 199 r	1 006	1 090 r	5 401	5 289 r
Sep 95	4 021	4 147 r	947	1 072 r	4 968	5 219 r
Oct 95	4 111	4 141 r	987	1 062 r	5 098	5 203 r
Nov 95	4 595	4 156 r	1 192	1 059 r	5 787	5 215 r
Dec 95	4 308	4 219	1 091	1 061	5 399	5 280

¹ Other vehicles excludes motor cycles, plant and equipment, caravans and trailers.
Reference: Unpublished statistics

9.1 PRIVATE NEW CAPITAL EXPENDITURE BY SELECTED INDUSTRY GROUPS (ORIGINAL SERIES)

Period	Selected Industry			Total	Seasonally adjusted
	Mining	Manu- facturing	Other selected industries	Original	
	(\$ million)				
Financial Years					
1993-94	3 619	529	1 823	5 972	5 957
1994-95	3 898	603	2 449	6 951	6 964
Quarters					
Mar 94	748	106	360	1 213	1 265
Jun 94	897	131	581	1 609	1 717
Sep 94	766	122	421	1 309	1 303
Dec 94	1 118	156	918	2 192	2 020
Mar 95	982 r	141 r	500 r	1 623 r	1 692 r
Jun 95	1 032	184	610	1 826	1 950

Reference: State Estimates of Private New Capital Expenditure (5646.0)

Analysis of Table 9.2

GSP grew 1.8% in the September quarter, to be 6.5% higher than in September quarter 1994. Growth in wages, salaries and supplements was lower than in recent quarters, rising 1.3% in the September quarter, following an increase of 1.8% in June quarter 1995. Indirect taxes less subsidies grew 1.6% in the September quarter, after falling 0.1% in March quarter 1995 and rising 1.0% in June quarter 1995.

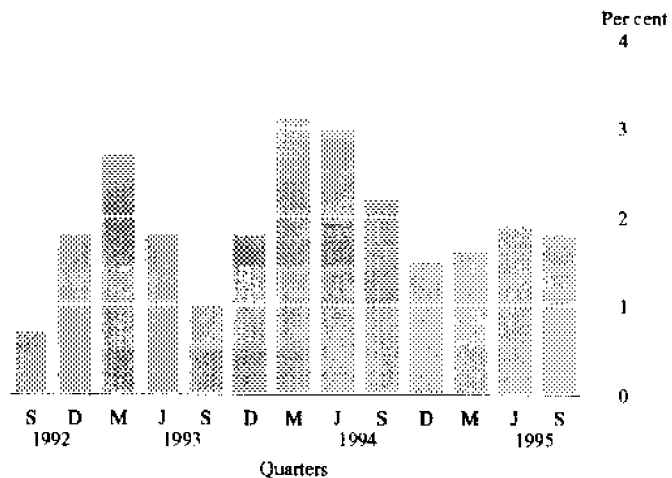
For more information about this table, call Vic Nowotny (09) 360 5333

9.2 STATE FINAL DEMAND AND PRODUCTION ACCOUNT TREND DATA AT CURRENT PRICES

Period	Wages salaries and supplements	Gross operating surplus	Indirect taxes less subsidies	GSP (income based)
	(\$ million)			
Quarters				
Mar 93	4 606	4 916	1 073	10 595
Jun 93	4 751	4 914	1 105	10 770
Sep 93	4 884	4 846	1 134	10 864
Dec 93	4 979	4 843	1 178	11 000
Mar 94	5 030	4 994	1 241	11 265
Jun 94	5 061	5 187	1 312	11 560
Sep 94	5 101	5 289	1 351	11 741
Dec 94	5 185	5 314	1 356	11 855
Mar 95	5 300	5 394	1 355	12 049
Jun 95	5 394	5 513	1 369	12 276
Sep 95	5 463	5 645	1 391	12 499

Reference: State Accounts (5242.0)

PERCENTAGE CHANGE IN GSP(A) - TREND
WESTERN AUSTRALIA



(A) Gross State Product at current prices
Source: State Accounts 5242.0

10.1 STATISTICAL SUMMARY

<i>Western Australia</i>							
<i>Indicator</i>	<i>Period</i>	<i>Unit</i>	<i>Current Australian figure</i>	<i>Current figure</i>	<i>Change from last period(%)</i>	<i>Figure one year ago</i>	<i>Change from one year ago (%)</i>
POPULATION							
Estimated resident population	Jun qtr 94	'000	17 843.3	1 701.9	0.4	1 676	1.5
Natural increase	Jun qtr 94	No.	35 358	3 940	-1.1	3 778	4.3
Net estimated migration gain	Jun qtr 94	No.	5 576	2 321	-46.9	394	589.1
TOURISM							
<i>Hotels and motels, etc with facilities</i>							
Guest arrivals	Sep qtr 95	'000	8 075.0	588.8	12.9	592.8	-0.7
Guest rooms available	Sep qtr 95	No.	168 912	14 720	-0.2	14 733	-0.1
Room occupancy rates	Sep qtr 95	%	59.9	61.1	6.4	60.4	1.2
<i>Overseas visitors</i>							
Long-term Arrivals	Sep qtr 95	No.	20 400	2 640	101.5	2 080	26.9
Short-term Arrivals	Sep qtr 95	No.	903 200	74 000	-0.3	73 600	0.5
<i>Resident Departures</i>							
Long-term Departures	Sep qtr 95	No.	17 000	1 760	-3.8	1 750	0.6
Short-term Departures	Sep qtr 95	No.	685 700	82 800	17.3	84 200	-1.7
EMPLOYMENT							
Employed persons (Trend)	Jan 96	'000	8 325.3	824.5	-0.5	817.7	0.8
<i>Unemployed persons</i>							
Looking for work (Original)	Jan 96	'000	831.7	76.8	13.3	71.9	6.8
Looking for work (Trend)	Jan 96	'000	768.4	69.7	2.3	66.9	4.2
<i>Participation rate</i>							
Original	Jan 96	%	63.3	65.6	-1.6	66.5	-1.4
Trend	Jan 96	%	63.9	65.9	-0.4	66.6	-1.0
<i>Unemployment rate</i>							
Original	Jan 96	%	9.2	8.6	14.6	8.1	6.2
Trend	Jan 96	%	8.5	7.8	2.6	7.6	2.6
<i>Full-time average weekly earnings</i>							
Males	Aug 95	\$	746.90	776.20	1.6	734.70	5.7
Females	Aug 95	\$	593.00	568.70	2.0	528.10	7.7
Persons	Aug 95	\$	691.20	702.90	1.6	656.90	7.0
All employees total earnings	Aug 95	\$	547.80	544.40	0.8	516.20	5.5
<i>Average weekly overtime hours</i>							
Per employee	Nov 95	hours	1.1	1.3	4.3	1.7	-21.3
Per employee working overtime	Nov 95	hours	6.9	8.2	2.4	8.5	-4.5
Employees working overtime	Nov 95	%	16.6	16.4	1.8	19.9	-17.6
<i>Industrial disputes in progress (working days lost)</i>							
Total	Oct 95	'000	79.6	47.6	180.0	1.4	3 300.0
Per '000 employees year ended	Oct 95	days	91.0	156.0	77.3	36.0	333.3
RETAIL							
<i>Monthly Retail Turnover</i>							
Original	Dec 95	\$m	13 270.3	1 367.4	28.2	1 266.2	8.0
Trend estimate	Dec 95	\$m	10 033.2	1 035.8	0.5	950.8	8.9
Consumer Price Index	Sep 95	Index No.	117.6	115.6	0.6	110.1	5.0

10.1 STATISTICAL SUMMARY continued

Indicator	Period	Unit	Western Australia				Change from one year ago (%)
			Current Australian figure	Current figure	Change from last period (%)	Figure one year ago	
CONSTRUCTION							
<i>Building Approvals</i>							
Dwelling Units	Dec 95	No.	8 837	995	-27.8	1 856	-46.4
Value of all building	Dec 95	\$m	1 667.1	147.5	-23.6	196.0	-24.7
<i>Building Commencements</i>							
Dwelling Units	Jun qtr 95	No.	35 647	4 642	-5.1	6 744	-31.2
Value of all building	Jun qtr 95	\$m	6 040.6	653.2	5.8	731.4	-10.7
<i>Total Building</i>							
Value of work done during	Jun qtr 95	\$m	5 995.1	669.7	-3.8	750.9	-10.8
Value of work yet to be done	Jun qtr 95	\$m	7 916.6	642.2	-0.7	734.9	-12.6
<i>Engineering Construction</i>							
Value of work commenced	Sep qtr 95	\$m	5 076.4	947.4	93.5	365.6	159.0
Value of work done during	Sep qtr 95	\$m	3 312.7	511.3	7.0	341.4	50.0
Value of work yet to be done	Sep qtr 95	\$m	6 315.4	1 177.8	11.9	775.7	51.9
<i>Housing Price Indexes</i>							
Materials used in house building	Sep qtr 95	Index No.	116.6	114.3	0.9	110.2	3.7
Project Homes	Sep qtr 95	Index No.	108.7	100.8	0.4	98.8	2.0
Sales of established houses	Sep qtr 95	Index No.	112.4	109.7	0.5	106.4	3.1
MINERAL EXPLORATION							
Gold	Jun qtr 95	\$m	158.6	108.2	36.1	90.2	19.9
Other minerals	Jun qtr 95	\$m	86.0	27.1	1.1	33.2	-18.4
OVERSEAS TRADE							
Imports	Dec 95	\$m	6 167.1	503.9	-4.7	437.6	15.1
Exports	Dec 95	\$m	6 333.5	1 716.2	-18.2	1 376.8	24.6
TRANSPORT							
<i>Passenger vehicle registrations</i>							
Original	Nov 95	No.	43 700	4 595	11.8	4 659	-1.4
Trend	Nov 95	No.	42 105	4 074	1.0	4 328	-5.9
<i>Total registrations</i>							
Original	Nov 95	No.	51 940	5 787	13.5	5 929	-2.4
Trend	Nov 95	No.	50 056	5 107	1.1	5 394	-5.3
FINANCE							
<i>Private New Capital Expenditure</i>							
Original	Jun qtr 95	\$m	9 519	1 826	12.5	1 609	13.5
Seasonally adjusted	Jun qtr 95	\$m	9 387	1 950	15.2	1 717	13.6
<i>Gross State Product (Income based)</i>							
Current prices	Sep qtr 95	\$m	116 382	12 243	4.9	11 689	4.7
State Final Demand at average 1989-90 prices	Sep qtr 95	\$m	103 857	10 333	-2.4	10 122	2.1



For more information...

The ABS publishes a wide range of information on Australia's economic and social conditions. Details are available in the *Catalogue of Publications and Products* is available from any of our Offices (see below for contact details).

Information Consultancy

Information tailored to special needs of clients or in-depth data investigations are provided by the ABS Information Consultancy Services in each of our Offices (available via the contacts below).

National Dial-a-Statistic Line

0055 86 400

(Steadycom P/L premium rate 25c/21.4 secs.)

This number gives 24 hours access, 365 days a year for a range of statistics.

Electronic Data Services

A growing range of our data is available on electronic media. Our Telestats service delivers major economic publications ready to download into your computer on the day of release. Our Ausstats service enables on-line access to a data base of thousands of up-to-date time series. Selected datasets are also available on diskette or CD-rom. For more details on our electronic services, contact Information Services in any of our Offices on the numbers below.

Bookshops and Subscriptions

There are now over 500 titles available from the ABS Bookshops in each of our Offices. The ABS also provides a subscription mailing service through which nominated publications are provided by mail at no additional cost. (Telephone Publications Subscription Service toll free on 008 02 0608 Australia wide).

Sales and Inquiries

■	Regional Offices		Information Enquiries	Bookshop Sales
	SYDNEY	(02)	268 4611	268 4620
	MELBOURNE	(03)	615 7000	615 7829
	BRISBANE	(07)	222 6531	222 6350
	PERTH	(09)	360 5140	360 5140
	ADELAIDE	(08)	237 7100	237 7582
	HOBART	(002)	20 5800	20 5800
	CANBERRA	(06)	207 0326	207 0326
	DARWIN	(089)	43 2111	43 2111
■	National Office			
	ACT	(06)	252 6007	008 020 608



Information Services, Exchange Plaza,
2 The Esplanade, Perth WA 6000.
or any ABS Office



© Commonwealth of Australia 1996

Recommended retail price: \$15.00



2130550002969
ISSN 0727-2367